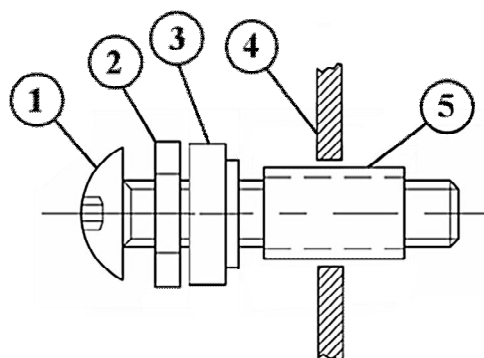
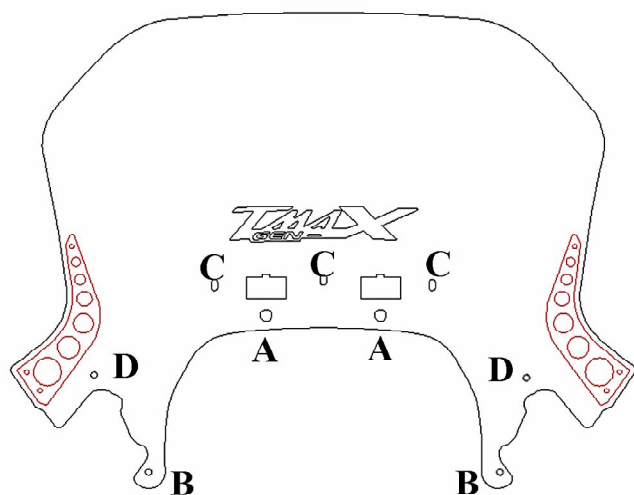


Insert all provided parts as shown on beside picture inside "A" holes:

- 1) original bolts
- 2) original washers
- 3) rubber spacer
- 4) screen
- 5) original bushes



Original screen



- 1) keep closer the screen and fix the original bolts on "A" holes and its bushes.
- 2) screw bolts on "B" holes. Take care to be in contact to rear view mirror's rod.
- 3) centering the screen on bike and screw "C" bolts.
- 4) tight Screw in "A" holes
- 5) Assembly the front body.
- 6) Matching screen and front body through "D" bolts and tight them